

Brushless Alternator for Industrial Applications

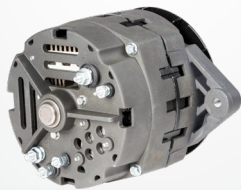
UPGRADE TO A BRUSHLESS ALTERNATOR TO IMPROVE DURABILITY AND EXTEND LIFE FOR MARINE, AGRICULTURE, OILFIELD, AND COUNTLESS OTHER INDUSTRIAL APPLICATIONS FACING TOUGH ENVIRONMENTS.

Engine Applications:

- 4.3L, 5.7L GM engines
- 5.9L Cummins engines

Replaces brush-style models:

- Delco Remy® 7SI, 10SI, 11SI, 12SI
- GM CS130
- Bosch, Mando, Motorcraft, and all other alternators with a 2" spool mount



SPECIFICATIONS

Performance Output	12 Volts 100 Amps
Rotation	Bi-directional
Maximum Speed	15,000 RPM
Temperature Rating	105°F/ 40°C
Mounting	Single and dual 2" spool
Weight	13 lbs/5.9 kg
Certification	Ignition protected and marine certified ISO 8846, SAE J1171, ABYC E-11, and USCG 33 CFR 183.410

Part #	Amps	Style	Warranty
61013122	70A	Single Spool Mount	2 year, unlimited hours
61013123	100A	Single Spool Mount	
61013124	100A	Dual Spool Mount	

delcoremy.com

13975 BorgWarner Drive
Noblesville, IN 46060 USA
For Customer Service or Technical
Assistance call 1-800-372-3555

