



CONNECT

MAY 2020

Versatile Alternator & Starter Options Stretch Your Inventory

The COVID-19 pandemic has impacted nearly every industry, and the heavy duty aftermarket is no exception. And while trucks are still running—with more ramping up each day—many fleets have been forced to do more on less.

We understand that you're trying to stretch your inventory right now by using what's on your shelf as well as parts that can be adapted to multiple applications.

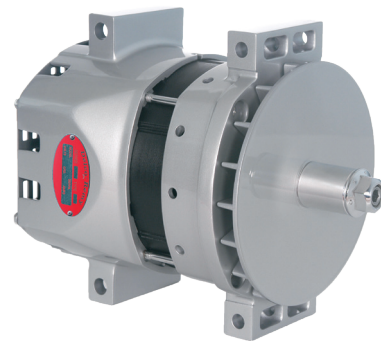
The portfolio of Delco Remy alternators and starters can help you do just that. The All-Makes Program—which helps ensure you have the right products on the shelf to maximize your inventory turns—gives you options to meet a wide range of customer needs.

Alternator Alternatives

Two great alternator options are the Delco Remy 40SI™ High Output Brushless Alternator and the Delco Remy 28SI™ High Output Brush Type Alternator.

The 40SI has four output levels, ranging from 240 to 320 amps, and is available with three mounting styles for greater flexibility. Likewise, the 28SI has three output levels, ranging from 160 to 200 amps, and is available in short J180 hinge, long J180 hinge and pad mounting configurations.

“The 40SI and 28SI are great alternator options because of their amperage levels,” says Nick Tosie, National Accounts Manager, Aftermarket. “We always recommend getting the highest amperage alternator because it will cover applications with lower amperage as well. It's better for the truck and better for the customer—making it a win-win all around.”



40SI SPECIFICATIONS

Performance Output	12 Volts 240 Amps (160 Amps at idle) 12 Volts 275 Amps (180 Amps at idle) 12 Volts 300 Amps (190 Amps at idle) 12 Volts 320 Amps (190 Amps at idle)
Maximum Speed	8,000 RPM Continuous, 10,000 RPM Intermittent
Rotation	Clockwise
Temperature Rating	240 & 275 Amp: 125°C/257°F 300 & 320 Amp: 115°C/239°F
Mounting	J180 Short Hinge Mount, J180 Long Hinge Mount, Pad Mount
Efficiency	72%
Weight	31 lbs/14.1 kg

(continued on page 3)

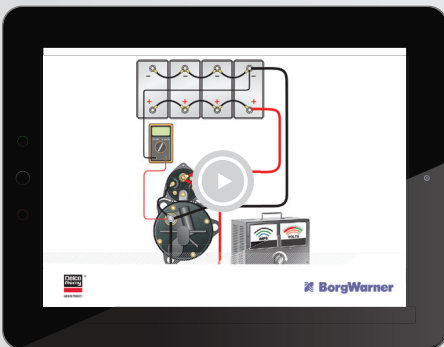
Brush Up on Your Technical Skills with Tech Tips

Now is a great time for your tech teams to brush up on skills—and we make it easy with our tech tip videos. We have more than 35 tech tip videos on a variety of topics. Visit delcoremy.com (Support > Tech Tip Videos) or the [BorgWarner YouTube page](#) to watch any of our tech tip videos.

If you're not sure where to start, check out some of our most popular videos that were recently updated:

Find more than
35 Tech Tip
videos on the
BorgWarner

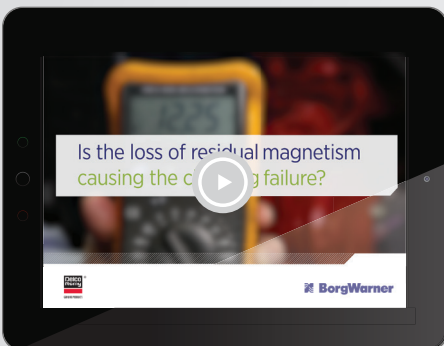
YouTube
Channel



Voltage Drop Test

Watch: <https://youtu.be/CQVrf-mxu-l>

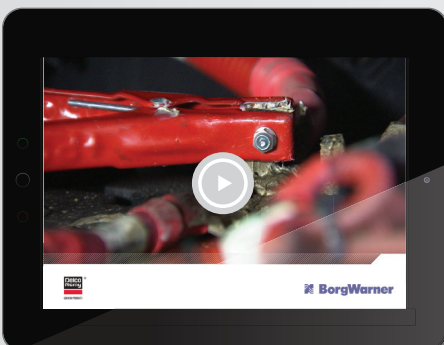
High or unwanted resistance is one contributing factor that leads to cranking and charging system problems. And, a visual inspection of cables and connections doesn't show what's going on inside them. Voltage drop testing is the only sure method of determining if there's an adequate delivery path for optimum starting, charging, battery performance and life. This video explains how to conduct a voltage drop test on the battery, alternator and starter.



Fix an Alternator that Won't Charge by Flashing the Field

Watch: <https://youtu.be/mOU7UyFKWEA>

Have you ever installed an alternator that won't charge? The Flashing the Field video shows you how to easily fix this alternator problem. This tech tip applies to the following Delco Remy alternator model families: 20SI™, 21SI™, 22SI™, 23SI™, 26SI™, 30SI™ and 36SI™.



Troubleshooting Starter Cranking Problems

Watch: <https://youtu.be/9XPQAi7qwok>

While cranking problems can be frustrating, identifying and correcting the root cause does not have to be. This video explains how to diagnose symptoms that occur in three troubleshooting categories:

- Click — No-Crank
- No-Click — No-Crank
- Slow Crank

Versatile Alternator & Starter Options

Stretch Your Inventory (continued from page 1)

Starter Alternatives

The best option when it comes to starters is the Delco Remy 39MT™ Heavy Duty Gear Reduction Starter.

“The 39MT covers tenfold as many applications as others,” says Tosie. “The rotatable flange feature was designed specifically to improve service flexibility and part number consolidation.”

Rotatable flange models easily replace competitive units and provide full industry application coverage of virtually every 12-volt and 24-volt application. By simply removing the flange screws, you are able to rotate the flange and align the starter to the engine.

Program Makes Best Use of Inventory

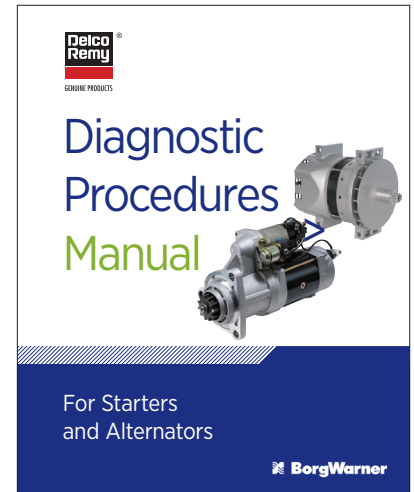
Tosie says that applying the All-Makes Program and these recommendations is actually a good practice anytime. When trying to make the best use of your inventory, consolidation is key.

If you're not sure of the right alternative for a starter or alternator, the online catalog on delcoremy.com is a great starting point (See article on page 4). The online catalog cross-references parts and gives you options. You also can reach out to your BorgWarner regional sales manager representing Delco Remy starters and alternators for help in consolidating your inventory list.



39MT SPECIFICATIONS

Engine Size	12 Volt up to 15 Liters 24 Volt up to 16 Liters
System Voltage	12 or 24 Volts
Rotation	Clockwise
Mounting	12 Volt SAE #1, SAE #3 24 Volt SAE #3
Pinion	11 Tooth, 6-8 Pitch 12 Tooth, 8-10 Pitch 12 Tooth, MOD 3 (Metric)
Peak Output	12V 7.3 kW, 24V 9.0kW
Battery Internal Resistance	12 Volt 2 mOhm 24 Volt 8 mOhm
Weight	30.8 lbs / 14 kg
Frame Diameter	4.5 in / 114 mm
Overall Length	14.09 in / 358 mm
Motor Type	Wound Field, Planetary Gear
Pinion Support	Noseless



New Diagnostic Procedures Manual

If you need help diagnosing an issue, download our new comprehensive manual from the Delco Remy website. The manual is a great resource for troubleshooting a heavy-duty electrical system.

It includes diagnosis charts for overcharge, undercharge and milled pinion symptoms. It also outlines several testing procedures, including battery cable tests, circuit tests, starter replacement determination, and an alternator wiring test.

Go to delcoremy.com
▼
Click the Support tab
▼
Select Download Literature
▼
Download Diagnostic Manual under
“Support/Troubleshooting” heading

Use Online Catalog to Find Part Numbers

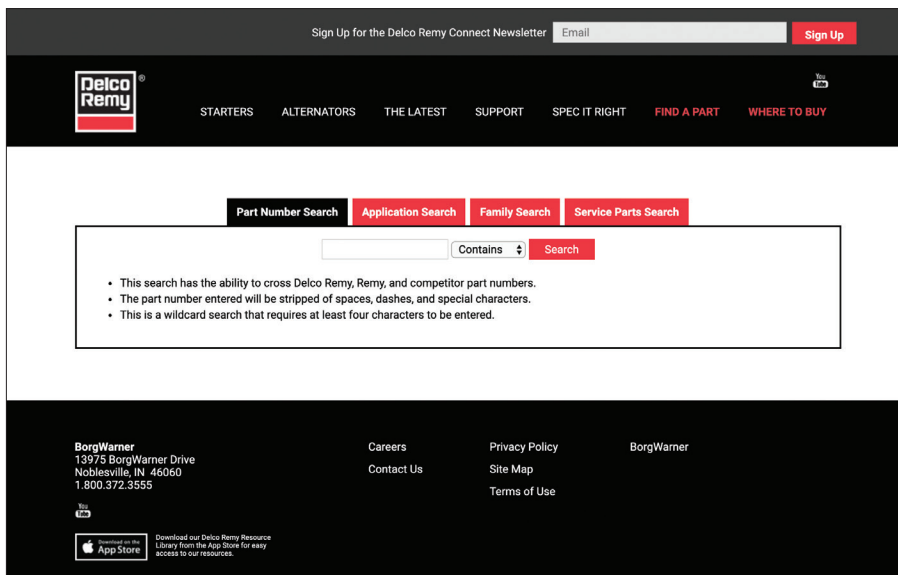
Need to quickly cross-reference a part number? Or do you need something to work in place of another part? Maybe you just need to upgrade to a more robust product? No problem!

Our online catalog allows you to quickly and easily find the product you need. Best of all, the entire cross-reference process now takes just minutes—and it gives you many more options.

Visit **delcoremy.com** and click the red “Catalog” button in the middle of the homepage to get started.



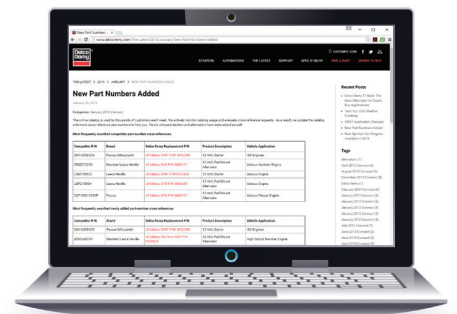
For a quick tutorial on how to use the online catalog, watch **Using the E-Catalog** on the **BorgWarner YouTube** page at <https://youtu.be/qiOHdm39p64>.



New Part Numbers

Go to The Latest at **delcoremy.com** to find the following:

- New part-number cross references
- Most frequently searched competitor part-number cross references
- Newly released Delco Remy Heavy Duty Starter



Follow Us Online

Stay connected to what's happening with Delco Remy genuine starters and alternators on the BorgWarner social media pages.



Facebook:
BorgWarner Inc.



Twitter:
@BorgWarner



Instagram:
borgwarnerofficial