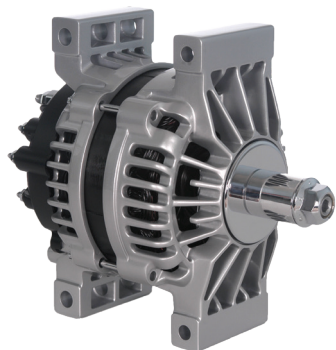




CONNECT

JUNE 2021

OE Applications for Volvo and Mack



Did you know that Delco Remy starters and alternators are equipped on all new Volvo and Mack trucks? Being the standard position for all applications means we have complete aftermarket coverage for all your Volvo/Mack vehicle needs! As you consolidate your inventory, you'll also benefit from the longer life cycle and availability of our products—not to mention our superior technical and customer service.

(continued on page 3)

ALTERNATOR CROSS-REFERENCE

Mack PN	Volvo PN2	Part #	Model	Output (Amps)	Voltage
2MJ525AM	21175411	8600228	24SI	100A	12V
21286172	21286172	8600402	24SI	100A	12V
21175413	21175413	8600229	24SI	130A	12V
21286175	21286175	8600403	24SI	130A	12V
21175415	21175415	8600231	24SI	145A	12V
21286181	21286181	8600404	24SI	145A	12V
21286183	21286183	8600405	24SI	160A	12V
21687315	21687315	8600519	24SI	160A	12V
21592037	21592037	8600314	28SI	200A	12V
21124257	21262255	19011258	35SI	135A	12V
2MJ531M	2MJ531M	8600162	35SI	135A	12V
21070188	21070188	8600244	35SI	135A	12V
21069742	21069742	8600247	35SI	135A	12V
21069746	21069746	8600248	36SI	165A	12V
21069683	21069683	8600252	36SI	165A	12V
21248989	21248989	8600367	36SI	165A	12V
21820791	21820791	8600548	36SI	165A	12V
	22988037	8600706	38SI	215A	12V
21439834	21439834	8600338	40SI	240A	12V
21654110	21654110	8600094	40SI	275A	12V
21529065	21529065	8600478	40SI	275A	12V
22011477	22011477	8600298	40SI	300A	12V
		8600580	55SI	275A	12V

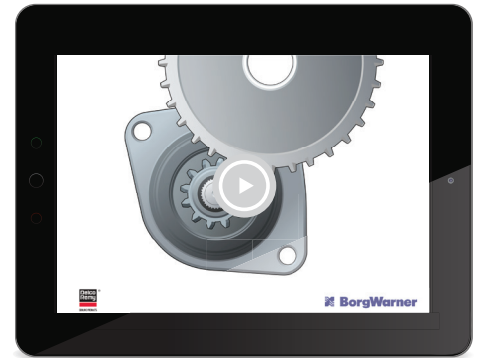
Tech Tip: Replacing a Starter with an Offset Pinion

Have you ever been replacing a starting motor only to find it has a different pinion than the original motor? You may think it's the wrong replacement part since the pinion size, tooth count and placement are different—but that may not be the case.

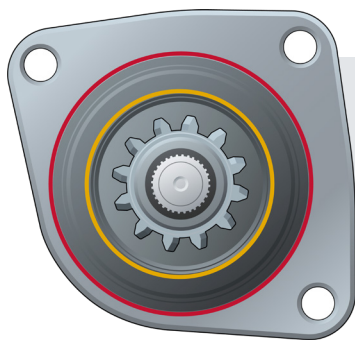
Starters are designed to match the engine ring gear for proper mesh and performance. Most starters—including Delco Remy branded starters—have a centered pinion. However, some manufacturers use an offset pinion.

If the old starter's pinion is offset and the new one is centered, you will notice the pinion on the new starter is larger in size. The larger pinion is needed in order for the pinion to reach the ring gear when it is centered. Additionally, you'll likely notice a higher tooth count.

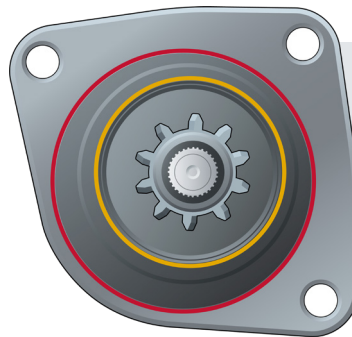
An offset pinion, on the other hand, has a smaller pinion size. So, in order for it to reach the ring gear, the pinion is offset and moved closer to the ring gear. Frequently, an offset pinion will have fewer teeth.



Our latest tech tip video focuses on replacing a starter with an offset pinion. Watch it on the **BorgWarner YouTube channel**.



Starter with Pinion Centered



Starter with Pinion Offset

24 Volt Off-Highway Starters & Alternators

When it comes to your off-highway applications, we've got you covered. Whether you have a smaller application or a more robust one, our 24 volt program is able to meet your needs. We have 24 volt starters and alternators for transit, construction, mining and many other off-highway applications.

(continued on page 4)



Watch Richard Gonzales, Regional Sales and Service Manager, talk about the benefits of the 24 volt program.

OE Applications for Volvo and Mack (continued from page 1)

STARTER CROSS-REFERENCE

Mack PN	Volvo PN2	Part #	Model	Voltage
	22398217	61003771	39MT	12V
22398216		61003772	39MT	12V
	22398215	61003773	39MT	12V
22398213		61003774	39MT	12V
	22398219	61003775	39MT	12V
22398223		61003776	39MT	12V
	21942883	61003778	39MT	12V
	22398232	61003779	39MT	12V
21942887		61003780	39MT	12V
21942888		61003781	39MT	12V
22436640		61003782	39MT	12V

When you need to keep your Volvo and Mack vehicles on the road, we've got what you need to keep moving.



OPTION CODES FOR NEW TRUCK ORDERS

Alternator (Volvo)	Model	Output (Amps)	Features
PJXN3X	36SI	165	Brushless, w/Remote Sense
PJXMLX	24SI	145	Brush w/Remote Sense
PJXM1X	35SI	135	Brushless, w/Remote Sense
PJXMX	38SI	215	Brushless, w/Remote Sense
PJXM7X	40SI	240	Brushless w/Remote Sense
PJXM9X	40SI	275	Brushless w/Remote Sense
PJXNAX	40SI	300	Brushless w/Remote Sense
PJXMRX	28SI	200	Brush
PJXMGX	35SI	135	Brushless
PJXMX	38SI	215	Brushless w/Remote Sense
PJXN3X	36SI	165	Brushless w/Remote Sense
PJXNAX	40SI	300	Brushless w/Remote Sense
Alternator (Mack)	Model	Output (Amps)	Features
132AB4	24SI	130	Brush
132AB2	35SI	135	Brushless
132AB5	24SI	145	Brush
132AB9	24SI	160	Brush
132AB6	36SI	165	Brushless
132AB8	36SI	165	Brushless, w/Remote Sense
132AD4	28SI	200	Brush, w/Remote Sense
132AF2	40SI	240	Brushless, w/Remote Sense
Starter (Volvo/Mack)	Model	Features	
NCXA5X	39MT	Planetary Gear Reduction	

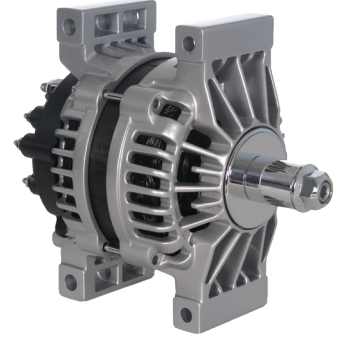


28SI™: Five Coreless Reman Options Now Available

We expanded our coreless reman offering once again with the addition of five configurations for the Delco Remy 28SI High Output Brush Type Alternator.

Our genuine reman products use the same manufacturing processes as OE—all the way down to the modeling of the production line. That means you can count on our starters and alternators being 100% tested to OE specifications. Plus, with coreless options, there's no extra work of tracking and returning the core.

For your cost-conscious customers, our coreless reman options are the way to go! A high-quality / low-cost replacement alternative—all backed by our industry-leading warranty!



Reman Part #	Coreless Reman Part#	Reman Description	New Service Part# Equivalent	WAI	Wilson (New)	Wilson (Reman)	Leece Neville	Fleetrite	Road Choice	Alliance	Meritor
8700080	61018105	28SI Pad 12V 160A (plug)	8600201	90-01-4730N	8700080						
8700082	61009624	28SI Pad 200A (plug)	8600253	8749N	90-01-4742N	90-01-4742					
8700088	61009224	28SI Pad 200A	8600314	8741N	90-01-4723N	90-01-4723	A28P200	FLTAL28200P		28P200	ALT1280
8700087	61012111	28SI S Hinge 200A	8600313		90-01-4724N	90-01-4274					
8700083	61009625	28SI L Hinge 200A	8600307	8745N	90-01-4725N	90-01-4725	A28J200L	FL-TAL28200J	ALT8745	28LH200	

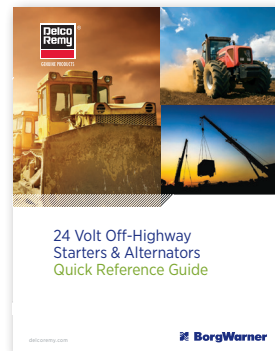
New service part # 8600201 is used on many Freightliners. If yours needs replaced, the coreless reman equivalent is a great option—with the added benefit of not having to handle the core.

24 Volt Off-Highway Starters & Alternators (continued from page 2)

Even more, our products are a great replacement alternative for John Deere, Caterpillar and Volvo off-highway applications.

A few things to know about our 24 volt program:

- More than 120 part number cross-references targeting high-volume applications with only 26 Delco Remy part numbers
- Products meet or exceed all OE specifications
- Available at competitive market prices—and backed by our industry-leading warranty, customer service and field sales network



Download our 24 volt brochure

BorgWarner Inc. | 13975 BorgWarner Drive, Noblesville, IN 46060

Delco Remy is a registered trademark of General Motors Corporation licensed to BorgWarner PDS (Anderson) L.L.C.