



CONNECT

FEBRUARY 2022

Rotatable Flange in 39MT Provides Flexibility & Inventory Consolidation

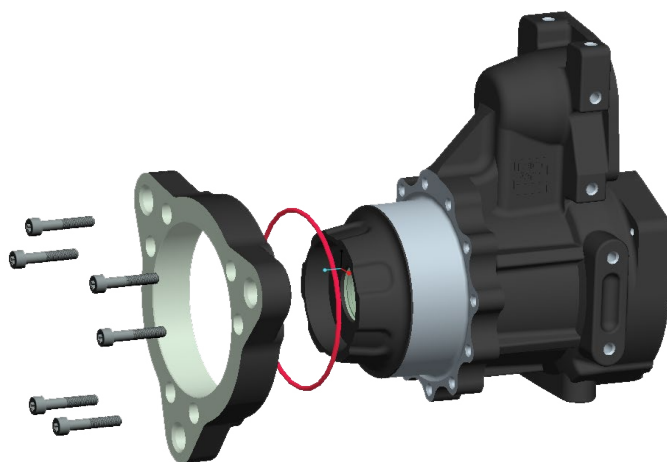
The [Delco Remy 39MT™ Heavy Duty Gear Reduction Starter](#) gives you complete industry coverage with just 15 part numbers—all thanks to the rotatable flange feature. The 39MT—the only OE starter on the market with a rotatable flange—easily replaces competitive units and provides coverage for virtually every application. Whether you're a fleet or a parts department, you'll be able to improve service flexibility and part number consolidation with the Delco Remy 39MT rotatable flange starter.

Rotating the Flange

The rotatable flange is made to be adjusted—and doing so doesn't void the three-year warranty. Rotating the flange is easy. You simply remove the flange screws, rotate it and reinsert the screws. This ensures the starter aligns to the engine.

Additionally, the Integral Magnetic Switch (IMS) is rotatable, too—into six different positions. The IMS reduces voltage drop and ensures the solenoid receives the maximum available voltage in any starting condition.

Available in both 12 and 24 volts, the 39MT is made for almost any heavy duty truck, off-highway vehicle or transit bus—giving you one product that meets the needs of the majority of your customers. Best of all, with its signature speed, torque and reliability, the 39MT gives you the confidence you need that the trucks in your fleet will turn over and start—and let you hit the road.



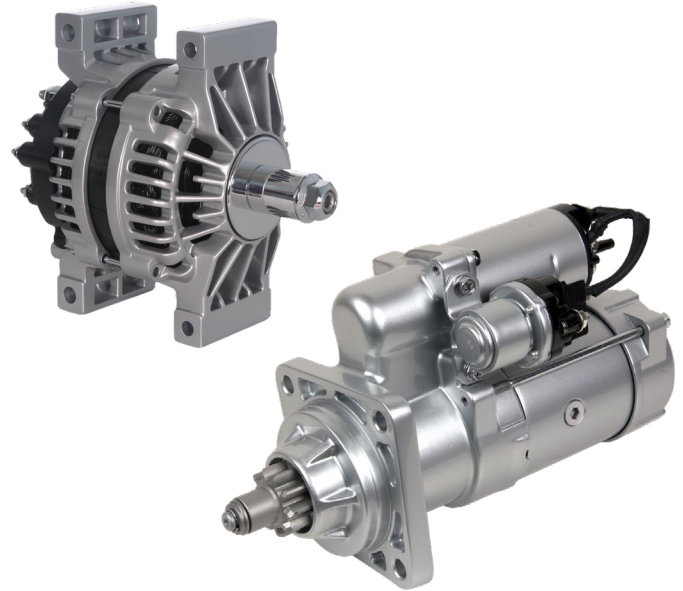
(continued on page 3)

OE Applications for Hino

Delco Remy starters and alternators are standard on all new Hino medium duty trucks, making BorgWarner the sole rotating electrics supplier on all Hino applications.

All Hino applications with the Cummins ISL or ISX engines are equipped with the Delco Remy [31MT™](#) Medium Duty Gear Reduction Starter—the newest Delco Remy starter. Hino is the second truck manufacturer to choose the 31MT as its standard position starter. The Delco Remy [24SI™](#) Brush Type Alternator is the standard position alternator, or you can upgrade to the Delco Remy [28SI™](#) High Output Brush Type Alternator for an even better value with its higher temperature rating and higher amperage at idle.

Together, all of this gives you the best value for rotating electrics.



Cummins Power - Alternators

	Customer Part Number	OE Part Number	All-Makes Part Number
24SI, 130A, PAD MOUNT	27060-EW110	61018388	8600143
35SI, 135A, PAD MOUNT	27060-EW120	61018394	8600127
28SI, 160A, PAD MOUNT	27060-EW130	61018390	8600201
28SI, 200A, PAD MOUNT	27060-EW150	61018392	8600253
24SI, 130A, PAD MOUNT	27060-EW160	61018389	8600143
35SI, 135A, PAD MOUNT	27060-EW170	61018395	8600127
28SI, 180A, PAD MOUNT	27060-EW140	61018391	8600078
28SI, 200A, PAD MOUNT	27060-EW180	61018393	8600253

Hino Power - Alternators

22SI, 100A, HINGE MOUNT	27060-E0140	8600198	19020310
22SI, 100A, HINGE MOUNT	27060-E0150	8600199	19020310
24SI, 130A, HINGE MOUNT	27060-E0231	8600452	8600310
28SI, 180A, HINGE MOUNT	27060-E0251	8600454	8600223
28SI, 200A, HINGE MOUNT	27060-E0490-A	8600596	8600313
35SI, 135A, HINGE MOUNT	27060-E0240	8600362	8600064
40SI, 275A, HINGE MOUNT	US27060-001	8600526	8600279

Cummins Power - Starters

Cummins ISB Pre March 2022	28100-EW080	61019507	N/A
Cummins ISB Post March 2022	28100-EW090	61019517	61006210

One Million Miles and Counting

Kyle Ohlemeier makes his living with his truck. He's driven over 1,135,000 miles as owner/operator of American Reaper Transportation. And for all those miles, he's had a consistent companion riding along with him—the original Delco Remy 36SI™ High Output Brushless Alternator that was put on the truck.

"It came with the truck, and it's true build quality," Kyle says. "It's durable, reliable and keeps the batteries and electrics going."

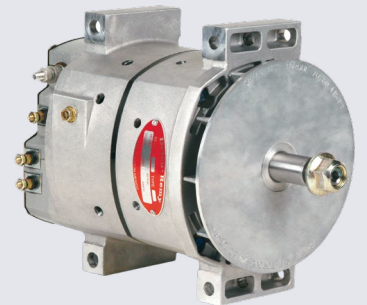
Phenomenal Piece of Engineering

Kyle says when it's time to replace it, the choice is obvious: another Delco Remy alternator.



"Why would I choose anything else? It's been solid from day one—it just works. It's gone more than a million miles and it's still going," he says. "It's a phenomenal piece of engineering."

Kyle, who has been an owner/operator for six years, regularly transports bulk containers, granular supplies, recyclables, non-perishable goods, etc. He needs to be able to hit the road at a moment's notice and, he counts on reliable products like the 36SI to ensure he can do just that.



About the 36SI

The 36SI is a durable brushless model available in an output rating of up to 170 amps at 12 volts, or up to 105 amps at 24 volts. The brushless design of the Delco Remy 36SI provides added durability and life.

Rotatable Flange in 39MT Provides Flexibility & Inventory Consolidation

(continued from page 1)

The 39MT packs a lot of power in a small package:

- **Lightweight planetary gear design and high torque**
- **Over Crank Protection (OCP)** that protects the starter from thermal damage by automatically resetting at a safe operating temperature
- **30% faster cranking speed performance** than other starters on the market
- **Electrical soft start** that rotates the pinion for proper ring gear engagement before cranking, minimizing tooth abutment related damage
- **Sealed solid link solenoid** that enhances reliability by eliminating contact welding in low system voltage situations
- **Sealed noseless configuration** for minimized debris contamination
- **Cold temperature performance** that exceeds the competition in peak power output at -20°C
- **3 year/unlimited miles warranty**



Video: Heavy Duty Diagnostic Tools

We provide a number of ways to help you diagnose your starting and charging electric systems. In addition to our tech support line and [library of tech tip videos](#), we have two important online resources you'll want to keep handy:

- [Heavy Duty Troubleshooting Guide](#)
- [Diagnostic Procedures Manual](#)



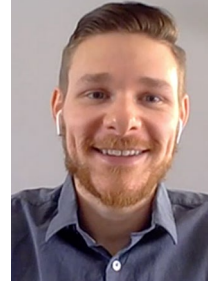
Watch this video with Regional Sales and Service Manager Kevin Holton. He talks about how these tools help diagnose any issues with batteries, cables, connections or components like the starter and alternator.



Shout-out to Midwest Wheel

Congratulations to Midwest Wheel for their selection as the 2021 Distributor of the Year at Heavy Duty Aftermarket Week (HDAW)! Midwest is the only three-time winner of this award given by *Trucks, Parts, Service*. Now in its 20th year, the *TPS* Distributor of the Year remains the aftermarket's highest honor.

Meet Our New RSSMs

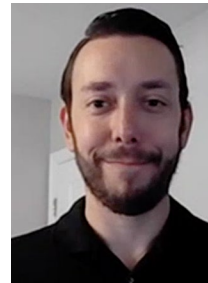


AUSTIN TONDREAU

- **OE Account Manager, Navistar and Hino**
- **Regional Sales and Service Manager: Michigan and Illinois**

"I grew up working on cars and motorcycles. To me, BorgWarner has always been the pinnacle in terms of OE and aftermarket brands. I like representing Delco Remy starters and alternators—they're top-of-the-line products in rotating electrics in the heavy duty industry."

[Watch this short video to learn more about Austin.](#)



NICK CHELMAN

- **OE Account Manager, Autocar and Transit Bus OEMs**
- **Regional Sales & Service Manager: Florida & Georgia**

"I've been familiar with BorgWarner for about 20 years. I was attracted to them because they are forward-thinking and investing a lot of resources into R&D for new products and electrification. They have been the market leader for over 100 years, and I'm very excited to be on board."

[Watch this short video to learn more about Nick.](#)



We have recently updated our Regional Sales and Service territories. [Find the rep](#) who supports your location.